

# Mobile Crane/Grue mobile **LTM 1650-8.1**

Preliminary  
Préliminaire

The maximum on 8 axles



770 USt



177 ft  
263 ft



361 ft



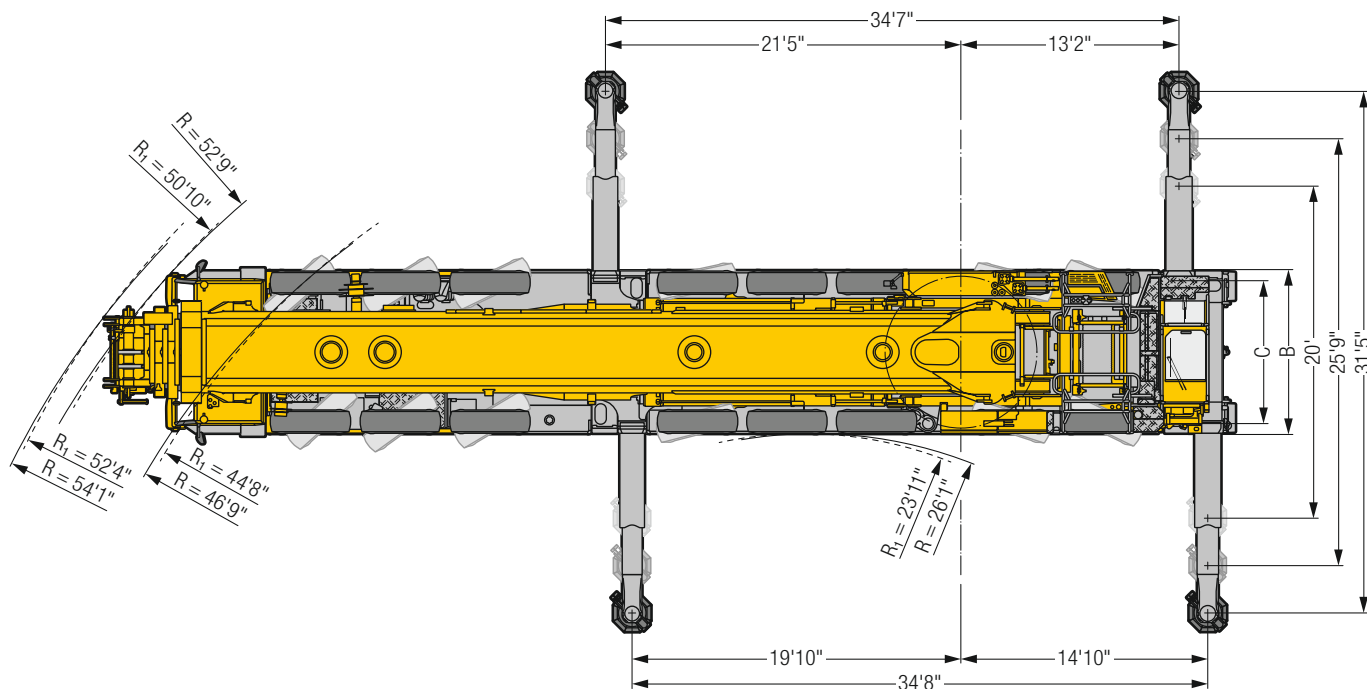
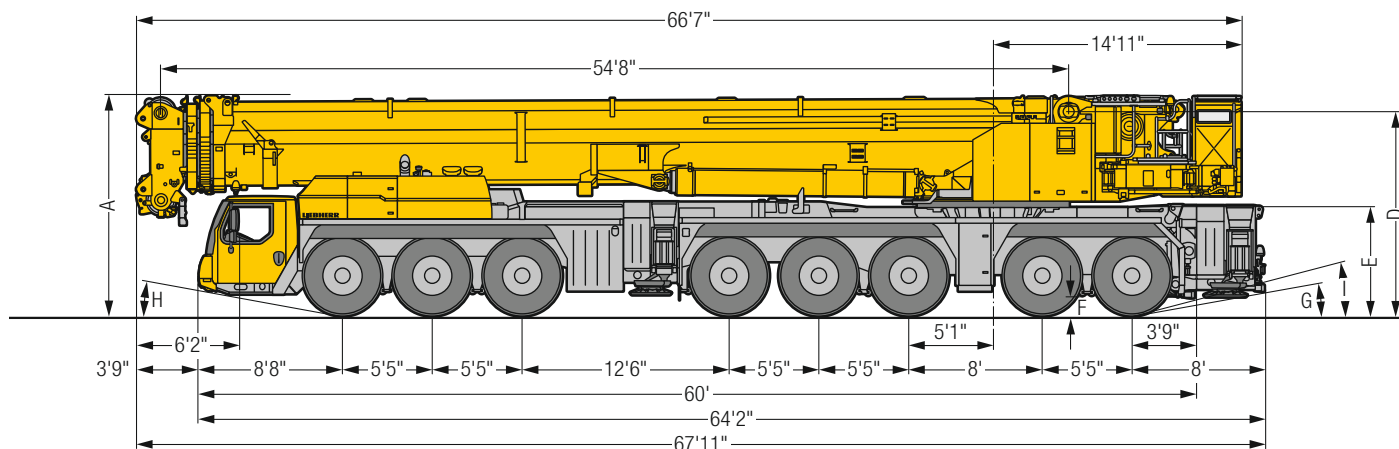
502 ft



# LIEBHERR

# Dimensions Encombrement


**T3**



US3273

R<sub>1</sub> = All-wheel steering - Direction toutes roues

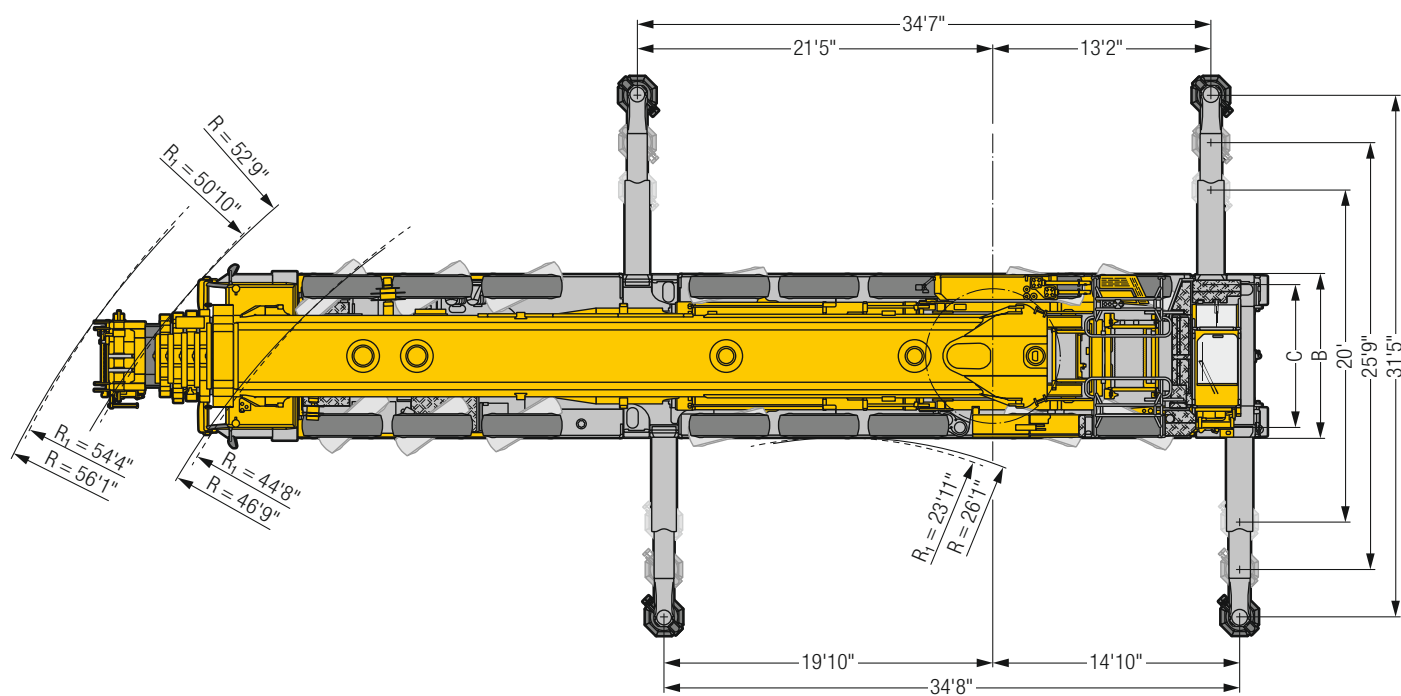
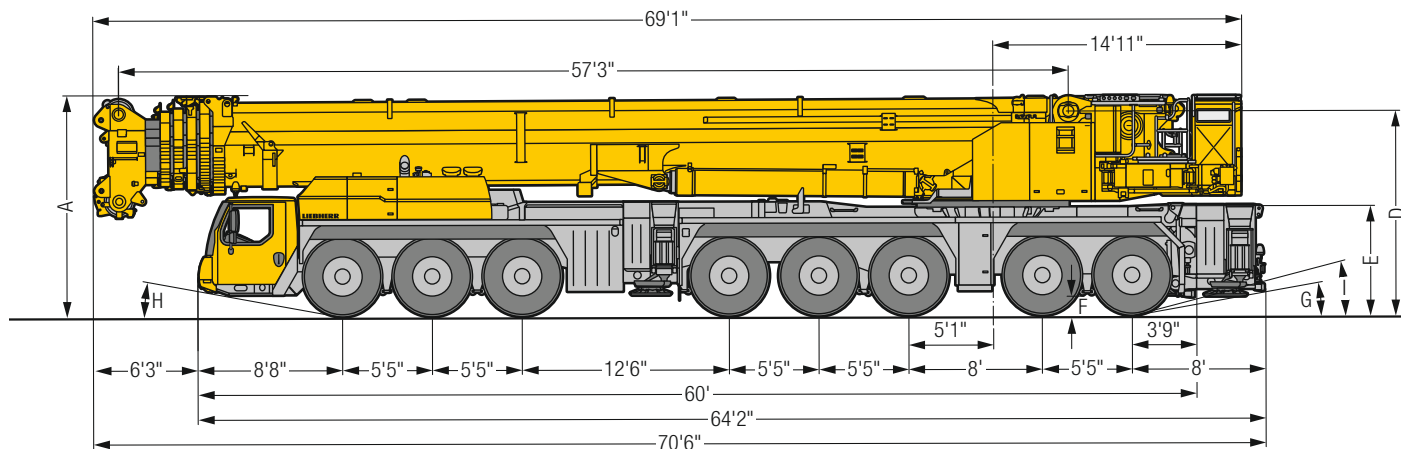
## Dimensions/Encombrement

	A	A 5" *	B	C	D	E	F	G	H	I
445/95 R 25 (16.00 R 25)	13'1"	12'9"	9'10"	8'4"	12'2"	6'5"	1'1"	10°	10°	16°
525/80 R 25 (20.5 R 25)	13'1"	12'9"	10'2"	8'5"	12'2"	6'5"	1'1"	10°	10°	16°

\* lowered - abaissé

# Dimensions Encombrement


**T5**



US3276

R<sub>1</sub> = All-wheel steering - Direction toutes roues

## Dimensions/Encombrement

	A	A 5" *	B	C	D	E	F	G	H	I
445/95 R 25 (16.00 R 25)	13'1"	12'9"	9'10"	8'4"	12'2"	6'5"	1'1"	10°	10°	16°
525/80 R 25 (20.5 R 25)	13'1"	12'9"	10'2"	8'5"	12'2"	6'5"	1'1"	10°	10°	16°

\* lowered - abaissé



# Mobile Crane/Grue mobile

## LTM 1650-8.1



T3 177 ft  
T5 263 ft



20 ft - 203 ft



69 ft - 299 ft



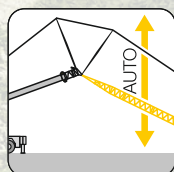
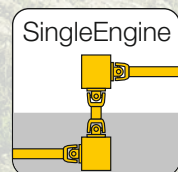
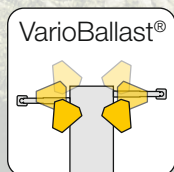
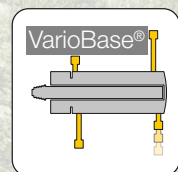
VarioBallast  
341,700 lbs

€COmode

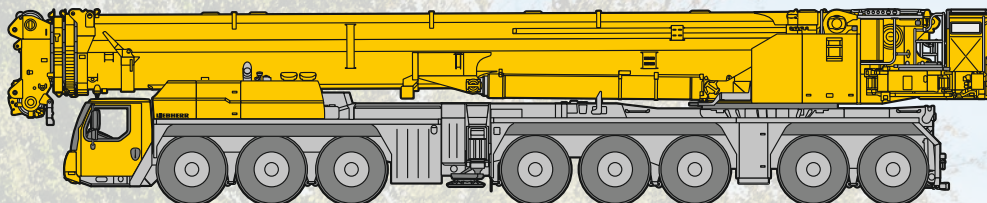
€COdrive

TRAXON

Torque



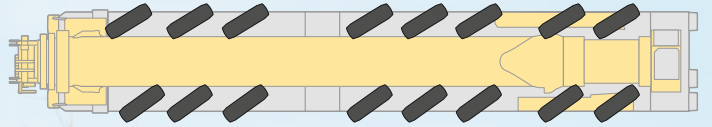
T3 177 ft



26,400 lbs    26,400 lbs    26,400 lbs    26,400 lbs    26,400 lbs  
26,400 lbs    26,400 lbs







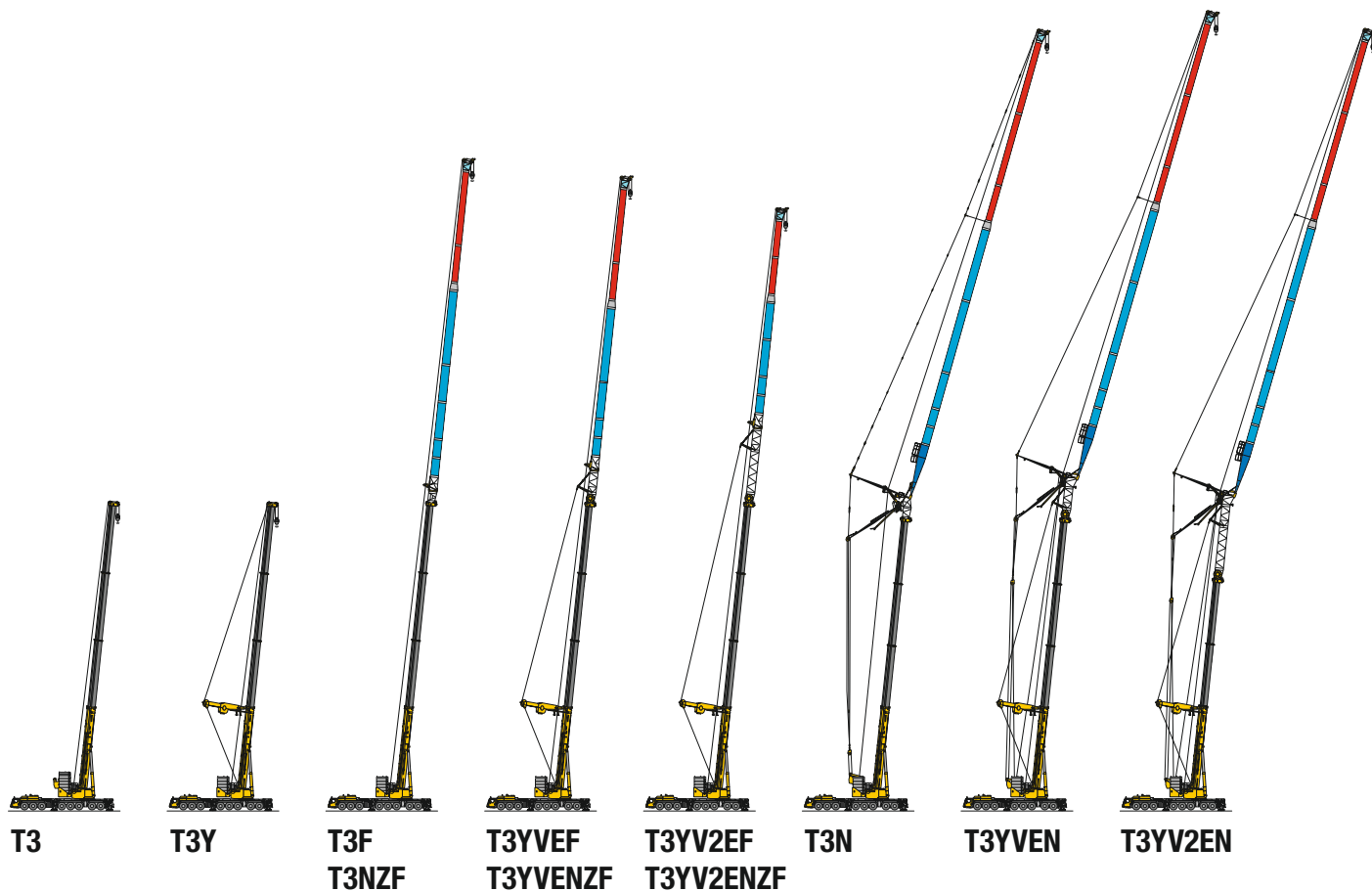
Variable steering concept  
Concept de direction variable



# Boom/jib combinations Configurations de flèche

**T3**

- T3** Telescopic boom 177 ft / Flèche télescopique 177 ft
- Y** Y-shaped guying system / Haubanage Y
- VE** Telescopic boom extension 13 ft + Eccentric / Rallonge de flèche télescopique 13 ft + Axe excentrique
- V2** Telescopic boom extension 26 ft / Rallonge de flèche télescopique 26 ft
- N** Luffing fly jib / Fléchette treillis à volée variable
- F** Fixed lattice jib / Fléchette treillis fixe
- NZF** Hydraulically adjustable lattice jib / Fléchette treillis à bras réglable hydrauliquement



# Boom/jib combinations Configurations de flèche

**T5**

- T5** Telescopic boom 263 ft / Flèche télescopique 263 ft
- Y** Y-shaped guying system / Haubanage Y
- VE** Telescopic boom extension 13 ft + Eccentric / Rallonge de flèche télescopique 13 ft + Axe excentrique
- N** Luffing fly jib / Fléchette treillis à volée variable
- F** Fixed lattice jib / Fléchette treillis fixe
- NZF** Hydraulically adjustable lattice jib / Fléchette treillis à bras réglable hydrauliquement



S3278

# Weights Poids



## Hook block/Moufles à crochet

526,900 lbs	11	22	10,140 lbs
465,175 lbs	9	19	9,260 lbs
377,000 lbs	7	15	8,820 lbs
284,400 lbs	5	11	7,720 lbs
187,390 lbs	3	7	6,610 lbs
82,450 lbs	1	3	3,860 lbs
27,560 lbs	–	1	1,545 lbs

# Working speeds Vitesses

## Crane carrier/Châssis porteur



	min. МИН.	max. МАКС.	%	
445/95 R 25 (16.00 R 25) 525/80 R 25 (20.5 R 25)	1.15	53	39.5 %	12 / R2

Theoretical gradeability/Aptitude théorique en pente

## Crane superstructure/Partie tournante

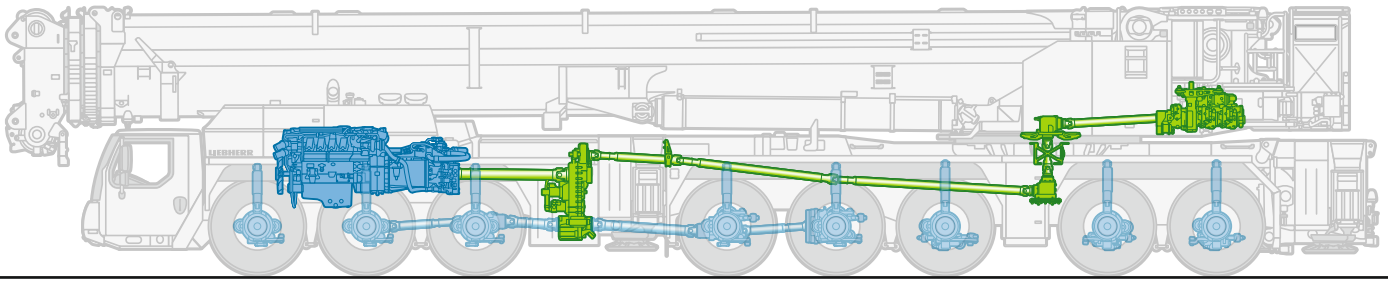
	max			F
	0 – 427 ft/min single line m/min au brin simple	0.98"	2.100 ft	28,325 lbs
	0 – 476 ft/min single line m/min au brin simple	0.98"	2.430 ft	28,325 lbs
	0 – 430 ft/min single line m/min au brin simple	0.98"	3.700 ft	31,473 lbs
	0 – 1 rpm			
	approx. 80 seconds to reach 84° boom angle env. 80 s jusqu'à 84°			
	approx. 370/670 seconds for boom extension from 55 ft – 177 ft / 57 ft – 263 ft env. 370/670 s pour passer de 55 ft – 177 ft / 57 ft – 263 ft			



# Liebherr Single-Engine Concept Concept de moteur unique Liebherr

Liebherr-8-cylinder engine 505 kW/686 HP  
Moteur 8 cylindres Liebherr 505 kW/686 CH

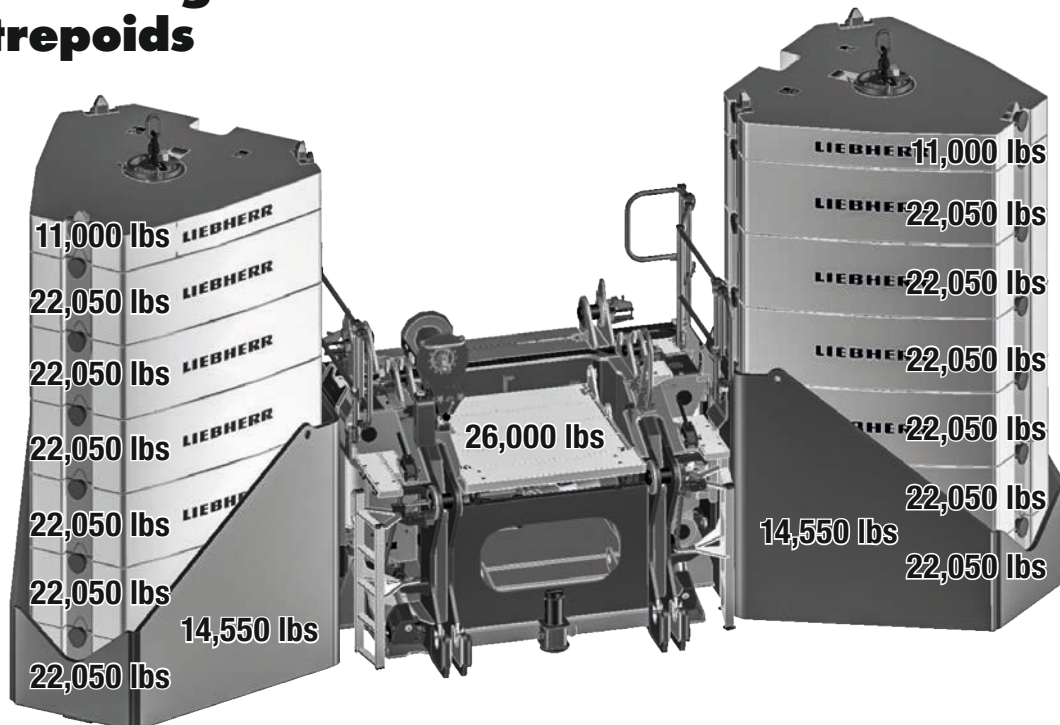
**€COmode**



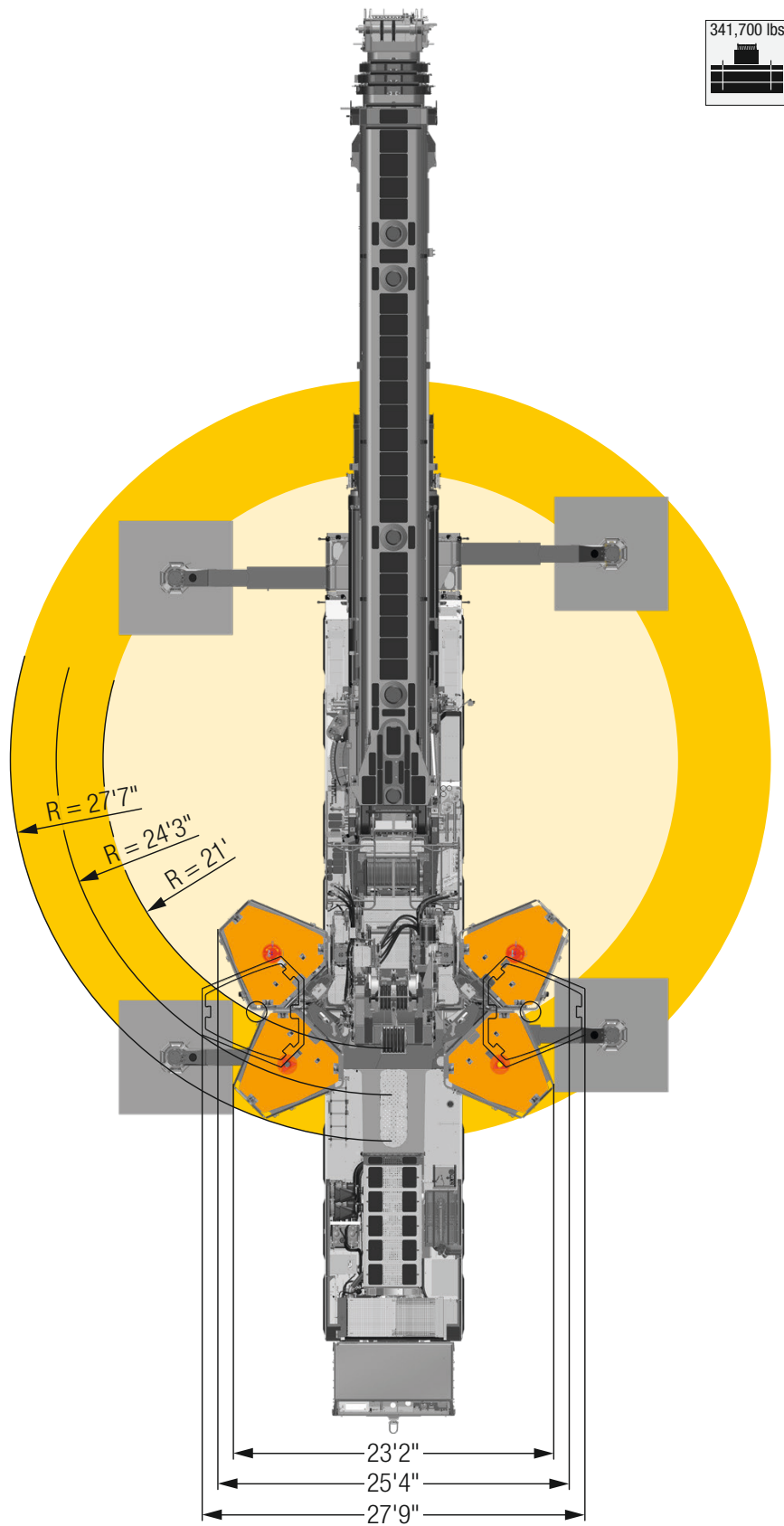
Mechanical shaft with high degree of efficiency  
Arbre mécanique à haut rendement

**€COdrive**

## Counterweight Contrepoids



# VarioBallast



Subject to modification / Sous réserve de modifications

**Liebherr-Werk Ehingen GmbH**  
Postfach 1361, 89582 Ehingen, Germany  
☎ +49 73 91 5 02-0, Fax +49 73 91 5 02-33 99  
www.liebherr.com, E-mail: info.lwe@liebherr.com  
www.facebook.com/LiebherrConstruction

Printed in Germany (1) lwe-td-275-00-us06-2019